



# SOLENOID VALVE - G1/2

## J Series

Cat No J010 - 05

### 5 / 2 Single solenoid pilot operated valve

#### Features

- ❑ Diaphragm operated poppet seat type
- ❑ Wide range of coil voltages
- ❑ Continuous duty cycle
- ❑ Low temperature of operation
- ❑ Manual operator ( Screw driver type )
- ❑ Noiseless performance
- ❑ Good flow characteristics

#### Technical Specifications

<b>Model #</b>	<b>EL15637</b>		
<b>Port size</b>	Inlet, Outlet, Exhaust - G1/2		
<b>Medium</b>	Filtered compressed air		
<b>Ambient Temperature</b>	-10° to +60° C		
<b>Medium temperature</b>	+5° to +50° C		
<b>Orifice (NW)</b>	12		
<b>Operating pressure (bar)</b>	2 - 10		
<b>Cv value</b>	3		
<b>Flow rate (lpm) *</b>	3000		
<b>Electrical</b>			
<b>Coil width</b>	32 mm		
<b>Voltage (V) ± 10%</b>	AC ( 50 Hz ) 24, 48, 110, 220	DC 12    24, 48, 110	
<b>Power consumption (Watts)</b>	6	9	8
<b>Duty cycle</b>	Continuous		
<b>Type of coil protection</b>	IP65		
<b>Class of insulation</b>	Class F		
<b>Materials of construction</b>	Aluminium, Brass, Stainless steel, Nitrile		

# For ordering refer page no. 2.1.1

\* at 6 bar inlet, 5 bar outlet, with pressure drop  $\Delta p = 1$  bar

#### Spare parts list

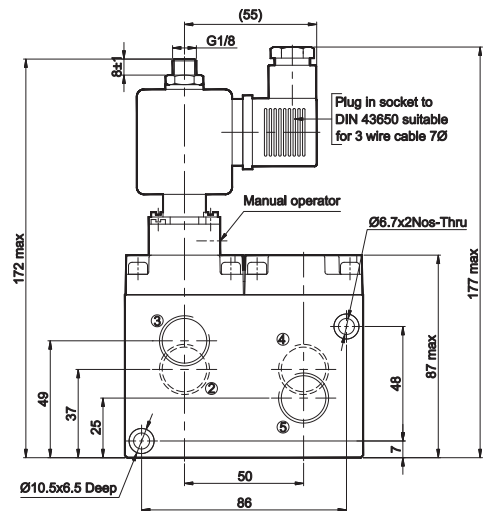
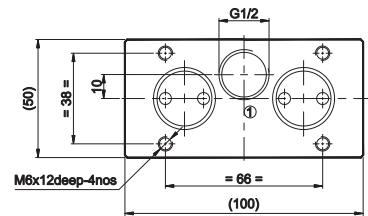
Ref. No.	Coil ( without socket )	Ordering no. for		
		Voltage	AC	DC
1		220	AC11A	- NA -
		110	AC11B	DC12Q
		48	AC11D	DC12S
		24	AC11G	DC12W
		12	- NA -	DC15R
2	<b>Moving core sub assembly complete</b> consists of 1. moving core subassembly 2. main spring	SSA0311	SSA0711	
3	<b>Solenoid valve sub assembly complete</b> ( without coil ) Consists of 1. Solenoid valve sub assembly 2. Screws – 2 no's 3. 'O' rings – 2 no's	E24001-A	E24001-D	
	<b>Seal kit</b> consists of all rubber items for the main valve (4)	SK5631		

#### Caution:

##### A. To ensure proper functioning

1. Please ensure that inlet port is connected to tubing of 10 mm ID minimum from the compressor air source.
2. Exhaust should not be restricted.

##### B. A.C coil should not be used on a D.C coil valve, and vice versa.



- ① - Inlet
- ② ④ - Outlet
- ③ ⑤ - Exhaust

